

# HTB 油路板型油壓缸 LAM. LWM



Manifold Type Hydraulic Cylinder LAM.LWM

• Bore:  $\phi 32$ - $\phi 63$ mm • Pmax: 140kg/cm<sup>2</sup>

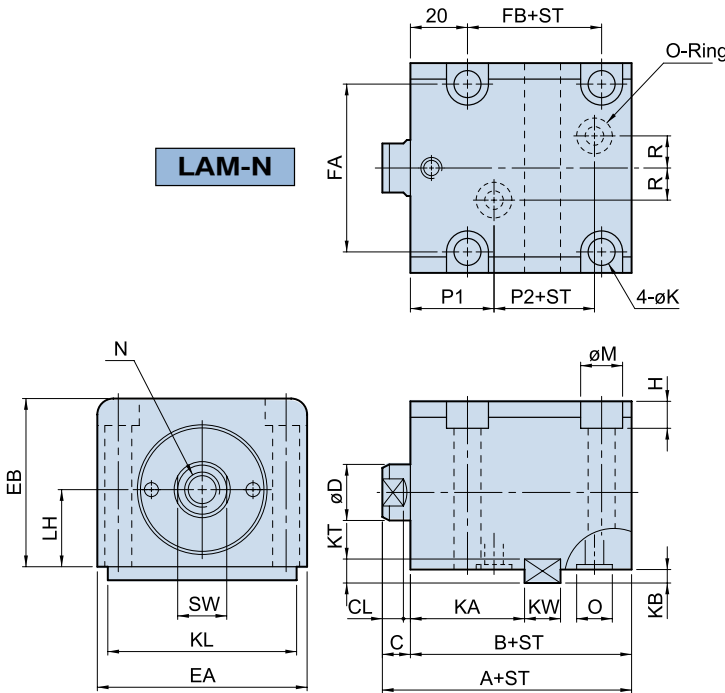
## 訂購標示法 Ordering Code

**HTB - LAM 32 × 20 N**

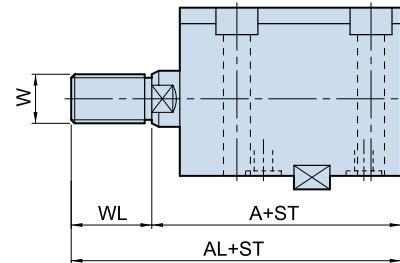
① ② ③ ④ ⑤

①	系列別 Series	HTB			
②	安裝型式 Mounting type	LAM	側向單軸型 Single end rod type		
		LWM	側向雙軸型 Double end rod type		
③	油缸內徑 Bore of cylinder	$\phi 32$ , $\phi 40$ , $\phi 50$ , $\phi 63$			
④	標準行程 Standard stroke	10, 20, 30, 40, 50			
⑤	軸端型式 Rod end type	內牙N: Internal thread N 外牙W: External thread W			

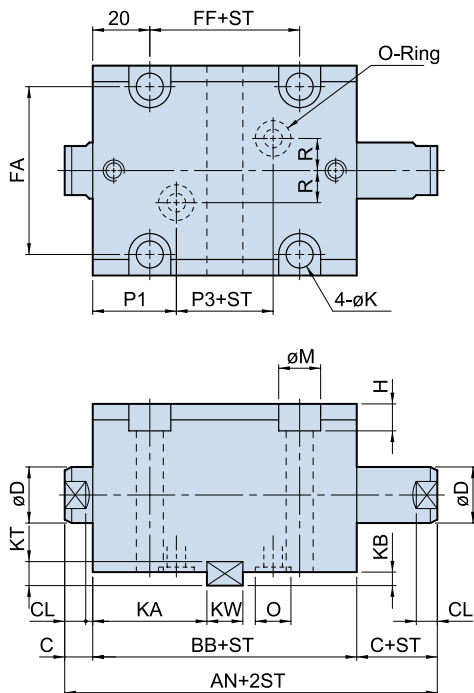
註行程10mm無附鍵槽及平鍵。  
Stroke: 10mm without key.



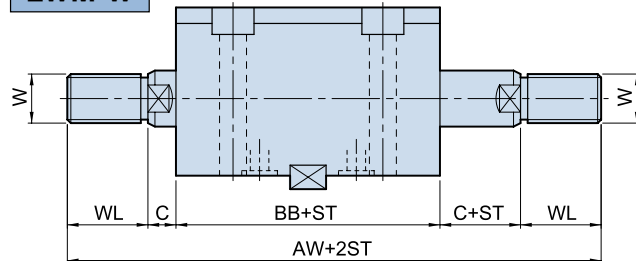
LAM-W



LWM-N



LWM-W



KEY



Key size

UNIT:mm

Bore	KW	KT	KL	KA	KB
$\phi 32$	12	8	63	38	4.5
$\phi 40$	12	8	70	38	4.5
$\phi 50$	14	9	80	40	5
$\phi 63$	16	10	100	42	5.5

ST=Stroke

## Dimensional table

右列行程之本體長度B及BB尺寸相同(5, 10)(15, 20)(25, 30)(35, 40)(45, 50)  
The length "B" and "BB" of cylinder body is the same of the stroke: (5, 10)(15, 20) (25, 30) (35, 40) (45, 50)

UNIT:mm

Bore	A	AL	AN	AW	B	BB	C	CL	D	SW	EA	EB	LH	FA	FB	FF	H	K	M	N	W	WL	P1	P2	P3	R	O
$\phi 32$	64	89	89	139	54	69	10	7	20	17	70	56	25	56	24	32	9	9	14	M12x1.75x15D.	M16x1.5	25	28	14	13	10	P9
$\phi 40$	65	95	90	150	55	70	10	7	25	22	80	64	29	62	23	32	11	11	18	M16x2.0x20D.	M22x1.5	30	28	15	14	10	P9
$\phi 50$	71	106	97	167	60	75	11	8	30	27	94	74	34	74	27	35	13	13	20	M20x2.5x25D.	M26x1.5	35	29.5	18	16	10	P11
$\phi 63$	80	120	108	188	67	82	13	10	35	32	114	89	42	90	32	42	15	15	22	M27x3.0x35D.	M30x1.5	40	31	20	20	10	P11