

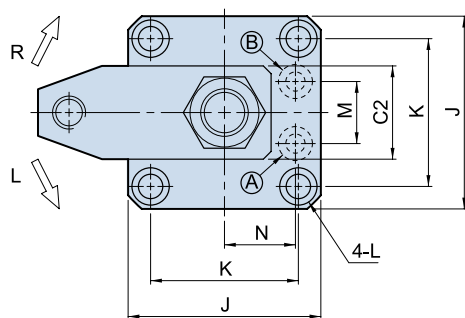
HSC 油壓轉角缸 M油路板型 Manifold type



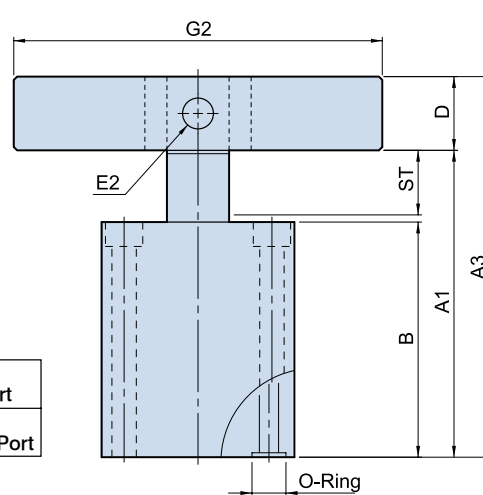
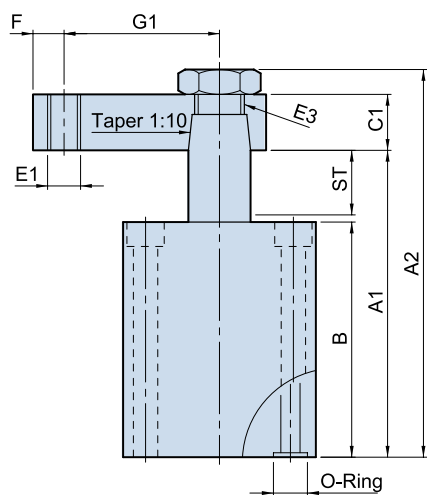
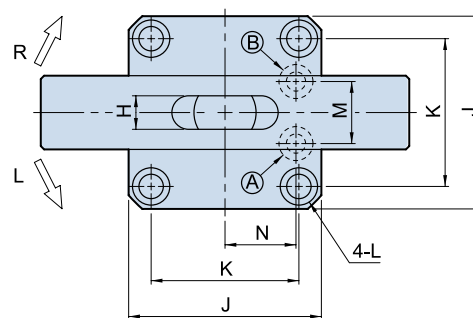
Hydraulic Swing Clamp Cylinder

• Bore: $\phi 25$ - $\phi 50$ mm • Pmax: 100kg/cm²

Single side swing clamp



Double side swing clamp



- (A) 夾持油孔
Clamping Port
- (B) 放鬆油孔
Unclamping Port

Dimensional table

UNIT:mm

ITEM \ MODEL	HSC-M25	HSC-M32	HSC-M40	HSC-M50
ST:Swing/Clamping	22:9/13	26:11/15	26:11/15	30:13/17
A1	101	115	120	134
A2	(124)	(140)	(148)	(166)
A3	120	137.2	142.2	159.4
B	76	85	90	100
C1	15	17	18	20
C2	27	31	31	37
D	□19	□22.2	□22.2	□25.4
E1	M10x1.5	M10x1.5	M10x1.5	M12x1.75
E2	$\phi 8$	$\phi 8$	$\phi 10$	$\phi 12$
E3	M14 x 1.5	M16 x 1.5	M18 x 1.5	M20 x 1.5
F	10	10	10	12
G1	50	55	60	65
G2	140	160	160	180
H	9	10	10	12
J	55	57	69	75
K	42	44	52	58
L	$\phi 6.8$ - $\phi 10.5$ x 6.5D.	$\phi 6.8$ - $\phi 10.5$ x 6.5D.	$\phi 9$ - $\phi 14$ x 9D.	$\phi 9$ - $\phi 14$ x 9D.
M	18	22	26	32
N	20	22	26	30
O-Ring	P7	P7	P8	P8