

HLC 槓桿油壓缸



Hydraulic lever-type Cylinder

• Bore:ø25-ø63mm • Pmax:70kg/cm²

產品簡介

- 此型式油壓缸，夾持機構為槓桿原理，活塞推出為夾緊狀態，主要機構零件安裝於缸體外部，易於維護。
- 缸體及夾持機構材料均採用機械構造用炭素鋼，堅固耐用，使用壽命長。



Product Introduction

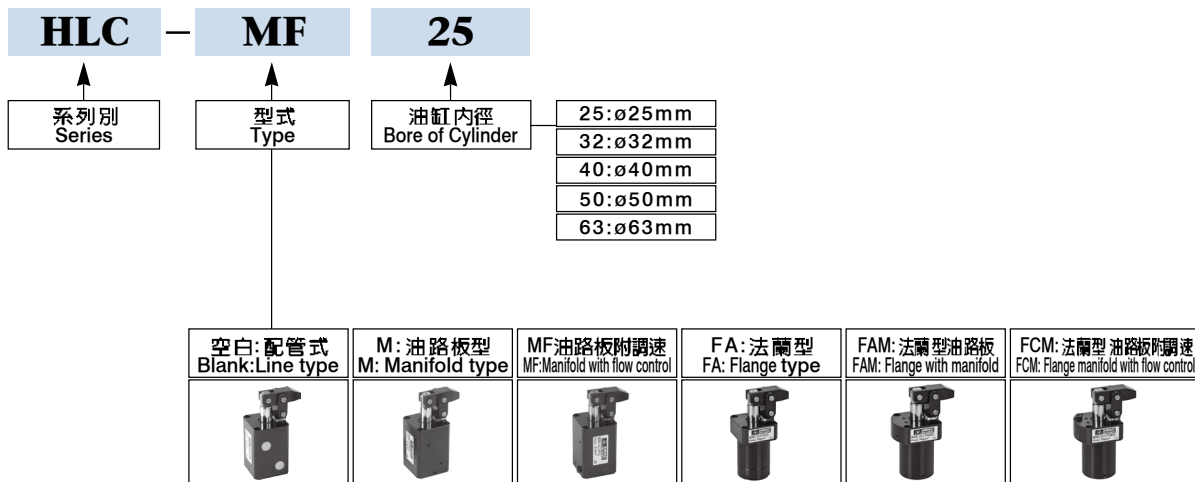
- The clamping mechanism on this series of hydraulic cylinder work with a lever principle. Piston push forward for clamping. It provides greater clamping force than that of swing clamp cylinder. Major parts are mounted outside of the cylinder barrel for convenient maintenance.
- The cylinder barrel and clamping mechanism are manufactured from structural carbon steel for maximum durability and long service life.



特性資料 Specifications

| | | | | | | | |
|------------|--------------------------|----------------------------------|-------------|------------|--------------|---------------|---------------|
| 油缸內徑 | Bore of cylinder | mm | ø25 | ø32 | ø40 | ø50 | ø63 |
| 活塞桿徑 | Piston rod diameter | mm | ø18 | ø20 | ø22.4 | ø28 | ø35 |
| 總行程 | Total stroke | mm | 25 | 25 | 30 | 34 | 40 |
| 受壓面積 拉入/推出 | Pressure area pull/push | cm ² | 2.37 / 4.91 | 4.9 / 8.04 | 8.63 / 12.57 | 13.47 / 19.63 | 21.55 / 31.17 |
| 理論夾持力 | Theoretical clamp | 30kg/cm ² | 116 | 191 | 287 | 453 | 701 |
| 使用流體 | Fluid | 已濾清之標準液壓油 Filtered hydraulic oil | | | | | |
| 最大操作壓力 | Max operation pressure | 70Kg/cm ² | | | | | |
| 操作壓力範圍 | Operation pressure range | 5-50Kg/cm ² | | | | | |
| 作動方式 | Acting type | 複動式 Double acting | | | | | |

訂購標示法 Ordering Code

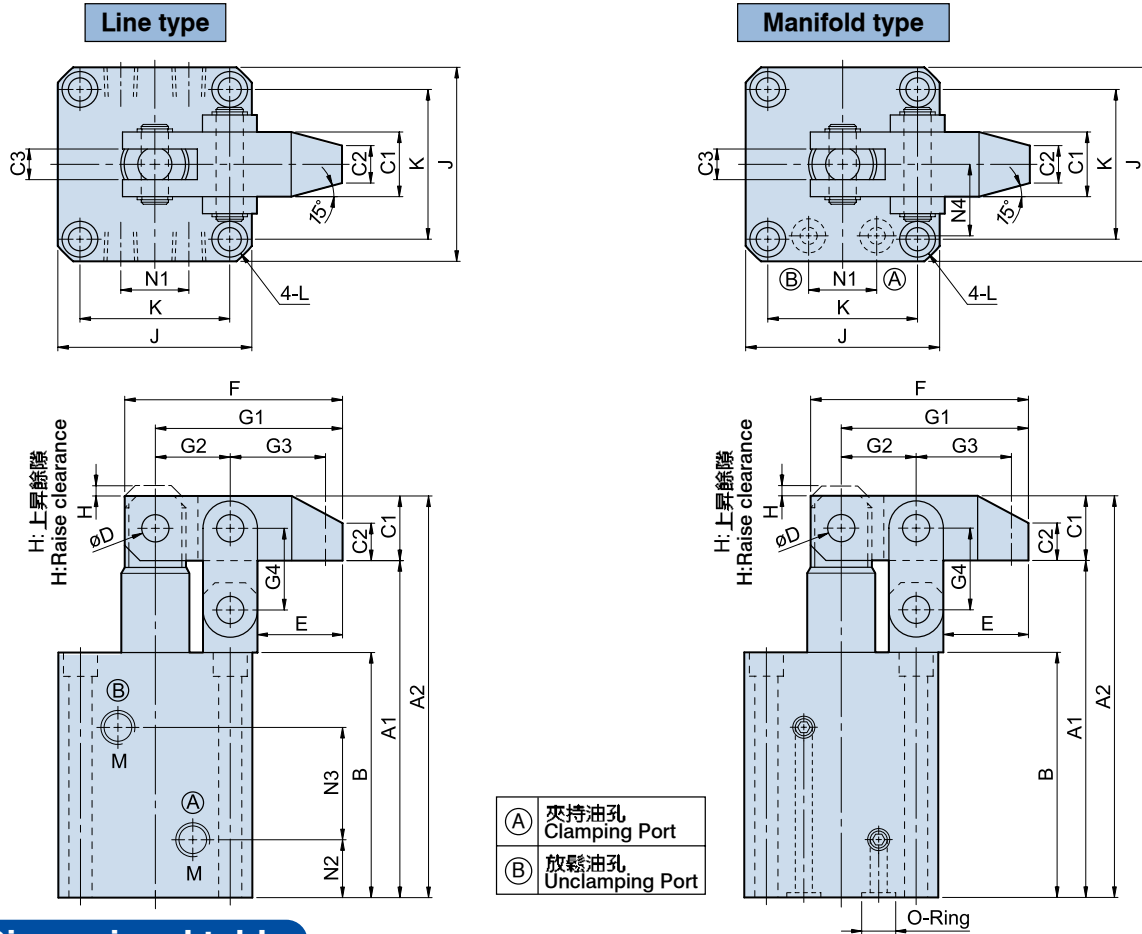


HLC 槓桿油壓缸



Hydraulic lever-type Cylinder

• Bore: $\phi 25$ - $\phi 63$ mm • Pmax: 70kg/cm²



Dimensional table

UNIT:mm

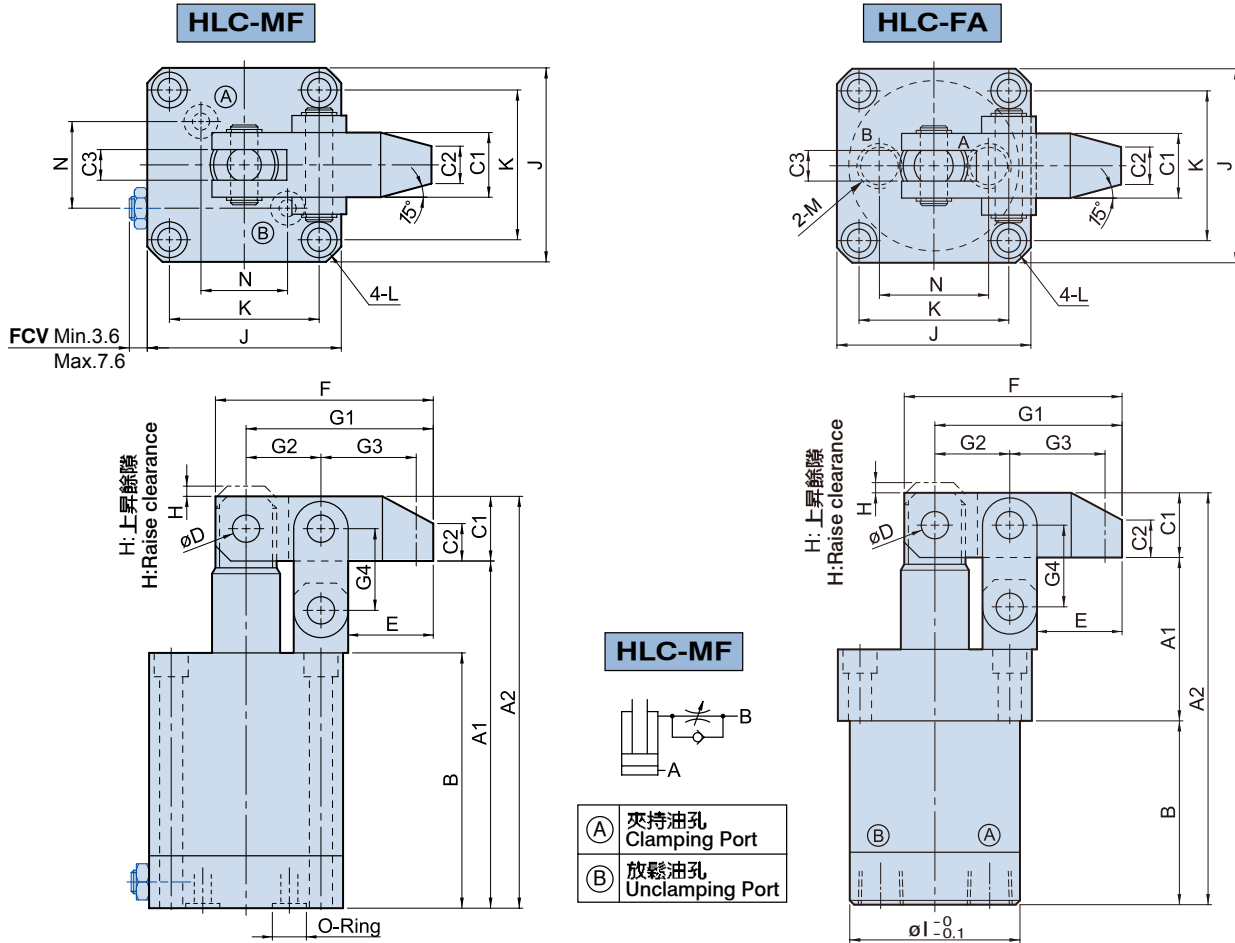
| ITEM \ MODEL | HLC-25 HLC-M25 | HLC-32 HLC-M32 | HLC-40 HLC-M40 | HLC-50 HLC-M50 | HLC-63 HLC-M63 |
|--------------|----------------------------------|----------------------------------|----------------------------|----------------------------|------------------------------|
| A1 | 103 | 112 | 122 | 137 | 155 |
| A2 | 122 | 131 | 144.2 | 162.4 | 186.8 |
| B | 76 | 85 | 90 | 100 | 111 |
| C1 | □19 | □19 | □22.2 | □25.4 | □31.8 |
| C2 | 11 | 11 | 13 | 15 | 19 |
| C3 | 9 | 9 | 10 | 11 | 15 |
| ϕD | $\phi 8$ | $\phi 8$ | $\phi 10$ | $\phi 12$ | $\phi 15$ |
| E | 25 | 25 | 30 | 35.5 | 43 |
| F | 64 | 64 | 77 | 90 | 110 |
| G1 | 55 | 55 | 66 | 77 | 94 |
| G2 | 22 | 22 | 26 | 30 | 36 |
| G3 | 28 | 28 | 34 | 39 | 48 |
| G4 | 24 | 24 | 29 | 33 | 39 |
| H | 3 | 3 | 4 | 4 | 4 |
| J | 55 | 57 | 69 | 75 | 96 |
| K | 42 | 44 | 52 | 58 | 75 |
| L | $\phi 6.8$ - $\phi 10.5$ X 6.5D. | $\phi 6.8$ - $\phi 10.5$ X 6.5D. | $\phi 9$ - $\phi 14$ X 9D. | $\phi 9$ - $\phi 14$ X 9D. | $\phi 11$ - $\phi 18$ X 11D. |
| M | PT1/8 | PT1/8 | PT1/4 | PT1/4 | PT1/4 |
| N1 | 18 | 22 | 26 | 32 | 38 |
| N2 | 17 | 19 | 19 | 21.5 | 22 |
| N3 | 33 | 38 | 40 | 45 | 52 |
| N4 | 20 | 22 | 26 | 30 | 38 |
| O-Ring | P7 | P7 | P8 | P8 | P9 |

HLC 槓桿油壓缸 MF油路板附調速/FA法蘭型



Hydraulic lever-type Cylinder MF.FA

• Bore: $\phi 25\text{-}\phi 63\text{mm}$ • Pmax: 70kg/cm^2



Dimensional table

UNIT:mm

| ITEM | MODEL | MF25 | MF32 | MF40 | MF50 | FA25 | FA32 | FA40 | FA50 | FA63 |
|----------|-------|---|--------------|---|----------------|---|--------------|---|----------------|---|
| A1 | | 112 | 115 | 130 | 145 | 49 | 52 | 57 | 67 | 77 |
| A2 | | 131 | 134 | 152.2 | 170.4 | 131 | 134 | 152.2 | 170.4 | 194.8 |
| B | | 85 | 88 | 98 | 108 | 63 | 63 | 73 | 78 | 86 |
| C1 | | $\square 19$ | $\square 19$ | $\square 22.2$ | $\square 25.4$ | $\square 19$ | $\square 19$ | $\square 22.2$ | $\square 25.4$ | $\square 31.8$ |
| C2 | | 11 | 11 | 13 | 15 | 11 | 11 | 13 | 15 | 19 |
| C3 | | 9 | 9 | 10 | 11 | 9 | 9 | 10 | 11 | 15 |
| ϕD | | $\phi 8$ | $\phi 8$ | $\phi 10$ | $\phi 12$ | $\phi 8$ | $\phi 8$ | $\phi 10$ | $\phi 12$ | $\phi 15$ |
| E | | 25 | 25 | 30 | 35.5 | 25 | 25 | 30 | 35.5 | 43 |
| F | | 64 | 64 | 77 | 90 | 64 | 64 | 77 | 90 | 110 |
| G1 | | 55 | 55 | 66 | 77 | 55 | 55 | 66 | 77 | 94 |
| G2 | | 22 | 22 | 26 | 30 | 22 | 22 | 26 | 30 | 36 |
| G3 | | 28 | 28 | 34 | 39 | 28 | 28 | 34 | 39 | 48 |
| G4 | | 24 | 24 | 29 | 33 | 24 | 24 | 29 | 33 | 39 |
| H | | 3 | 3 | 4 | 4 | 3 | 3 | 4 | 4 | 4 |
| ϕl | | — | — | — | — | $\phi 45$ | $\phi 50$ | $\phi 58$ | $\phi 68$ | $\phi 87$ |
| J | | 55 | 57 | 69 | 75 | 55 | 57 | 69 | 75 | 96 |
| K | | 42 | 44 | 52 | 58 | 42 | 44 | 52 | 58 | 75 |
| L | | $\phi 6.8\text{-}\phi 10.5 \times 6.5\text{D.}$ | | $\phi 9\text{-}\phi 14 \times 9\text{D.}$ | | $\phi 6.8\text{-}\phi 10.5 \times 6.5\text{D.}$ | | $\phi 9\text{-}\phi 14 \times 9\text{D.}$ | | $\phi 11\text{-}\phi 17 \times 11\text{D.}$ |
| M | | — | — | — | — | PT1/4 | PT1/4 | PT1/4 | PT1/4 | PT1/4 |
| N | | 19 | 21 | 23 | 28 | 25 | 32 | 40 | 50 | 63 |
| O-Ring | | P7 | P7 | P9 | P9 | — | — | — | — | — |

HLC 槓桿油壓缸 MF 油路板附調速

Manifold with flow control

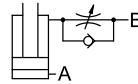
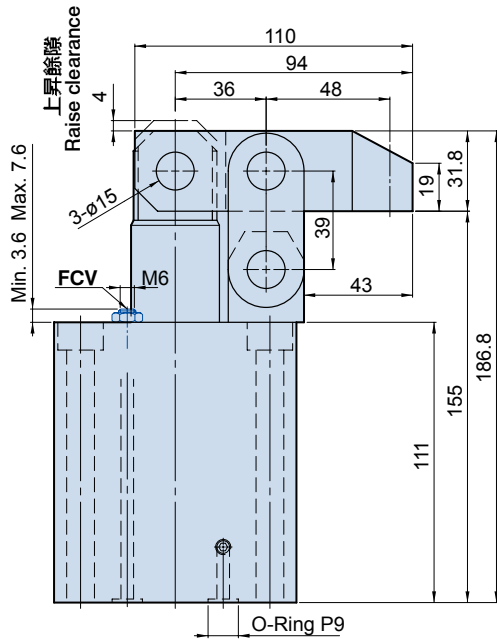
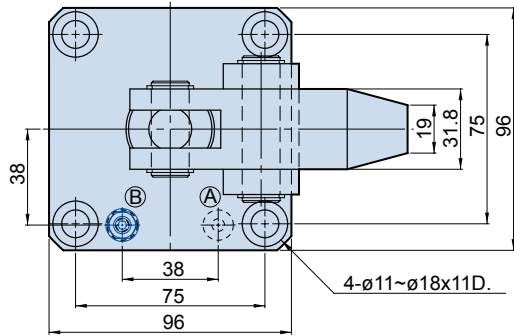


Hydraulic lever-type Cylinder MF

• Bore: $\phi 63\text{mm}$

• Pmax: 70kg/cm^2

HLC-MF63



| | |
|---|-------------------------|
| Ⓐ | 夾持油孔 Clamping Port |
| Ⓑ | 放鬆油孔 Unclamping Port |

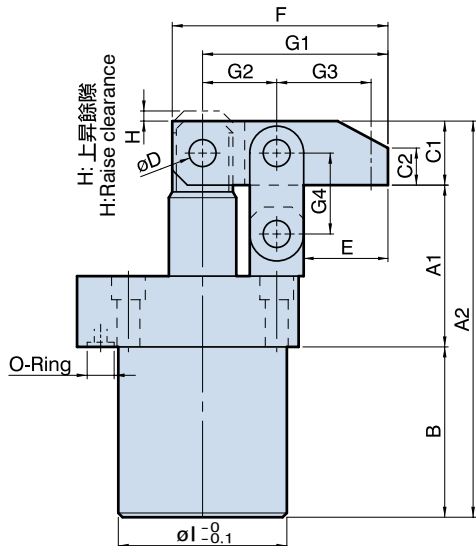
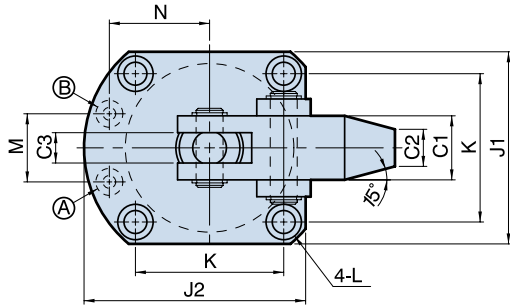


HLC 槓桿油壓缸 FAM 法蘭型油路板 Flange with manifold



Hydraulic lever-type Cylinder FAM

• Bore: $\phi 25\text{-}\phi 50\text{mm}$ • Pmax: 70kg/cm^2



- (A) 夾持油孔
Clamping Port
- (B) 放鬆油孔
Unclamping Port



HLC-FAM Bore -L

HLC-FAM Bore -R

Dimensional table

UNIT:mm

| ITEM \ MODEL | HLC-FAM25 | HLC-FAM32 | HLC-FAM40 | HLC-FAM50 |
|--------------|---|---|---|---|
| A1 | 49 | 52 | 57 | 67 |
| A2 | 122 | 131 | 144.2 | 162.4 |
| B | 54 | 60 | 65 | 70 |
| C1 | □19 | □19 | □22.2 | □25.4 |
| C2 | 11 | 11 | 13 | 15 |
| C3 | 9 | 9 | 10 | 11 |
| ϕD | 8 | 8 | 10 | 12 |
| E | 25 | 25 | 30 | 35.5 |
| F | 64 | 64 | 77 | 90 |
| G1 | 55 | 55 | 66 | 77 |
| G2 | 22 | 22 | 26 | 30 |
| G3 | 28 | 28 | 34 | 39 |
| G4 | 24 | 24 | 29 | 33 |
| H | 3 | 3 | 4 | 4 |
| ϕI | $\phi 45$ | $\phi 50$ | $\phi 58$ | $\phi 68$ |
| J1 | 55 | 57 | 69 | 75 |
| J2 | 64 | 65.5 | 79 | 87 |
| K | 42 | 44 | 52 | 58 |
| L | $\phi 6.8\text{-}\phi 10.5 \times 6.5\text{D.}$ | $\phi 6.8\text{-}\phi 10.5 \times 6.5\text{D.}$ | $\phi 9\text{-}\phi 14 \times 9\text{D.}$ | $\phi 9\text{-}\phi 14 \times 9\text{D.}$ |
| M | 20 | 22 | 26 | 30 |
| N | 28 | 29 | 34.5 | 39 |
| O-Ring | P6 | P6 | P9 | P9 |

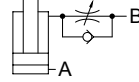
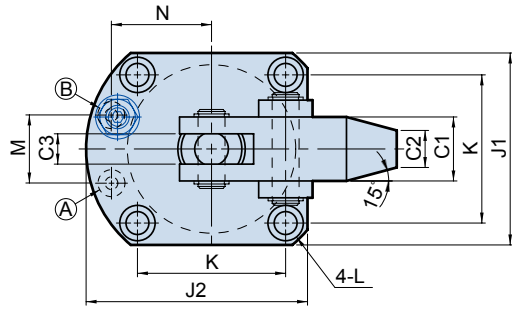
HLC 槓桿油壓缸 FCM 法蘭型油路板附調速

Flange type manifold with flow control



Hydraulic lever-type Cylinder FCM

• Bore: $\phi 25$ - $\phi 63$ mm • Pmax: 70kg/cm²

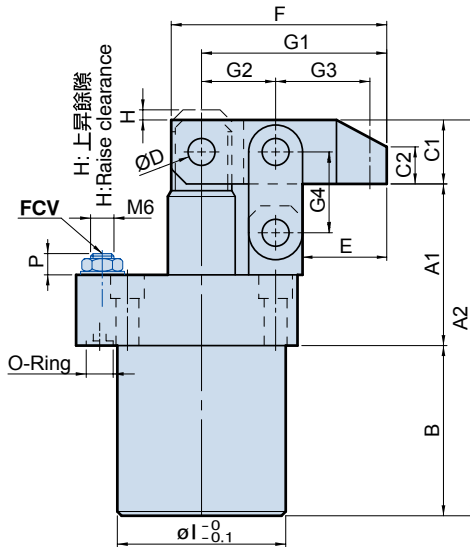


- (A) 夾持油孔
Clamping Port
- (B) 放鬆油孔
Unclamping Port



HLC-FCM Bore -L

HLC-FCM Bore -R



Dimensional table

UNIT:mm

| ITEM | MODEL | HLC-FCM25 | HLC-FCM32 | HLC-FCM40 | HLC-FCM50 | HLC-FCM63 |
|----------|-------|---------------------------------|---------------------------------|---------------------------|---------------------------|-----------------------------|
| A1 | | 49 | 52 | 57 | 67 | 77 |
| A2 | | 122 | 131 | 144.2 | 162.4 | 186.8 |
| B | | 54 | 60 | 65 | 70 | 78 |
| C1 | | □19 | □19 | □22.2 | □25.4 | □31.8 |
| C2 | | 11 | 11 | 13 | 15 | 19 |
| C3 | | 9 | 9 | 10 | 11 | 15 |
| ϕD | | 8 | 8 | 10 | 12 | 15 |
| E | | 25 | 25 | 30 | 35.5 | 43 |
| F | | 64 | 64 | 77 | 90 | 110 |
| G1 | | 55 | 55 | 66 | 77 | 94 |
| G2 | | 22 | 22 | 26 | 30 | 36 |
| G3 | | 28 | 28 | 34 | 39 | 48 |
| G4 | | 24 | 24 | 29 | 33 | 39 |
| H | | 3 | 3 | 4 | 4 | 4 |
| ϕl | | $\phi 45$ | $\phi 50$ | $\phi 58$ | $\phi 68$ | $\phi 81$ |
| J1 | | 55 | 57 | 69 | 75 | 96 |
| J2 | | 64 | 65.5 | 79 | 87 | 112 |
| K | | 42 | 44 | 52 | 58 | 75 |
| L | | $\phi 6.8$ - $\phi 10.5$ x6.5D. | $\phi 6.8$ - $\phi 10.5$ x6.5D. | $\phi 9$ - $\phi 14$ x9D. | $\phi 9$ - $\phi 14$ x9D. | $\phi 11$ - $\phi 17$ x11D. |
| M | | 20 | 22 | 26 | 30 | 36 |
| N | | 28 | 29 | 34.5 | 39 | 50 |
| O-Ring | | P6 | P6 | P9 | P9 | P9 |
| P Min. | | 7.1 | 4.1 | 4.1 | 3.6 | 3.6 |
| P Max. | | 10.2 | 8.1 | 8.1 | 7.6 | 7.6 |